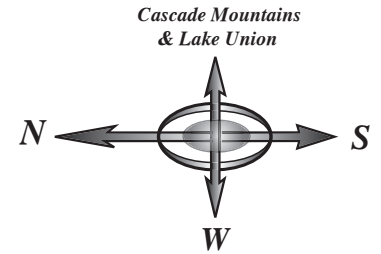
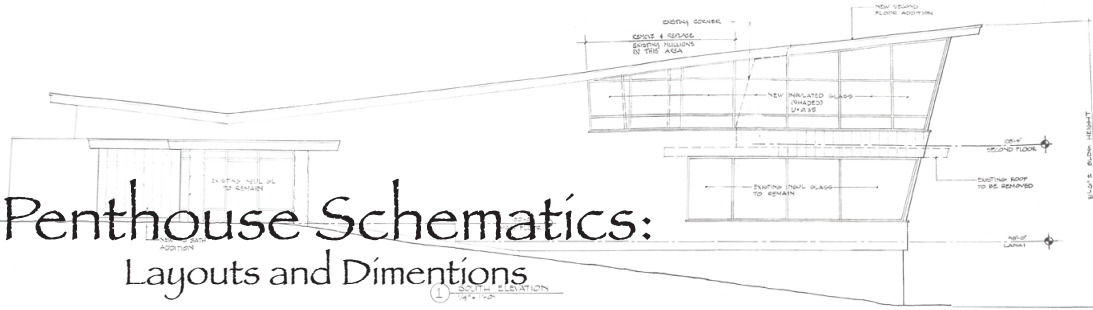


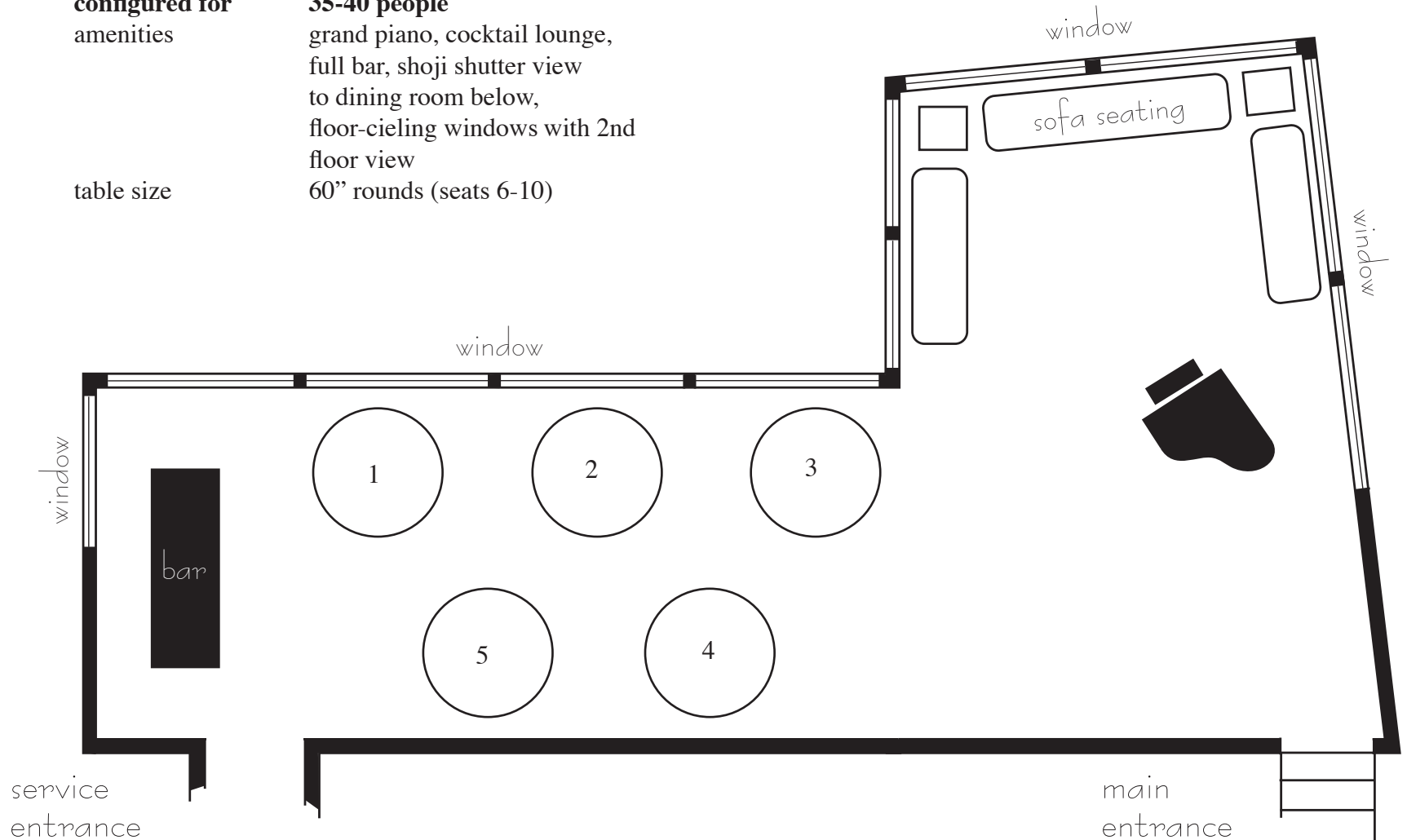
# Penthouse Schematics:

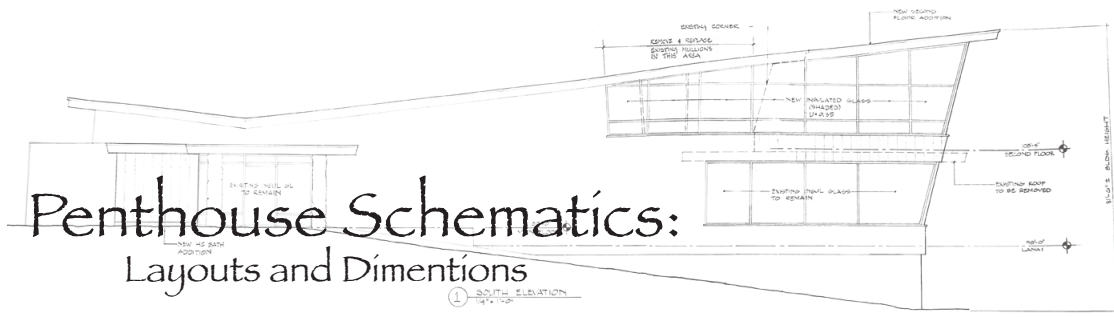
## Layouts and Dimensions



room capacity  
configured for  
amenities

90  
**35-40 people**  
grand piano, cocktail lounge,  
full bar, shoji shutter view  
to dining room below,  
floor-to-ceiling windows with 2nd  
floor view  
table size  
60" rounds (seats 6-10)

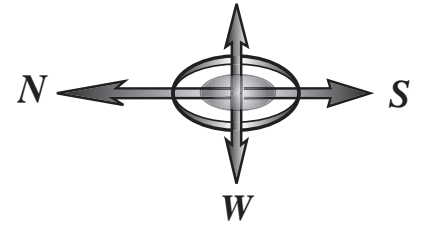




# Penthouse Schematics:

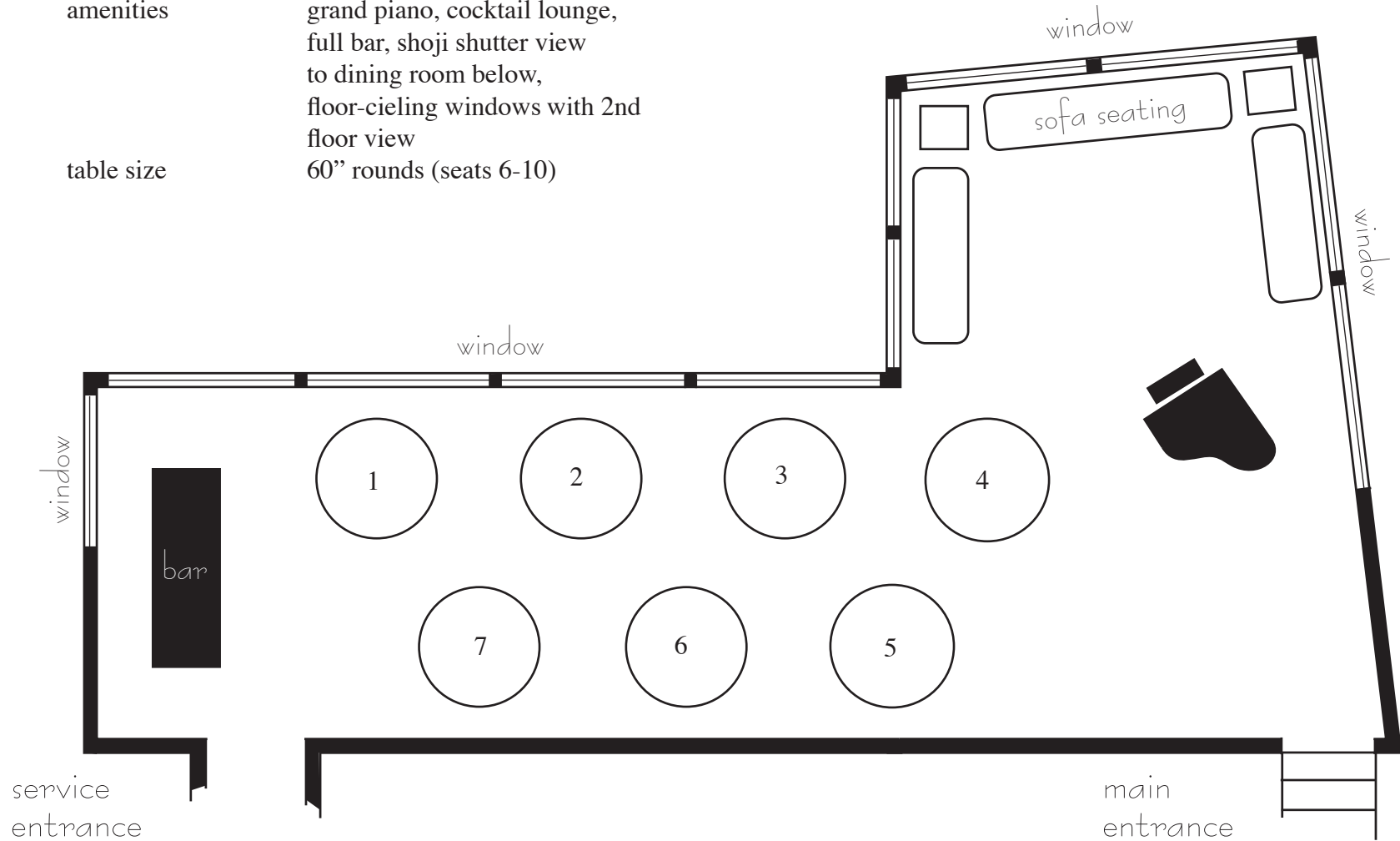
## Layouts and Dimensions

Cascade Mountains  
& Lake Union

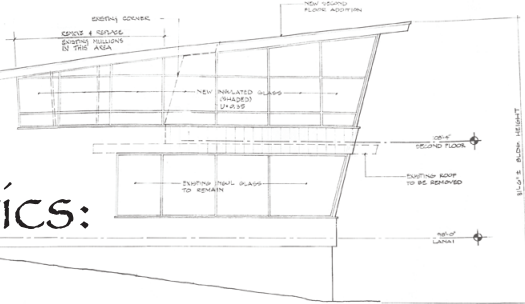
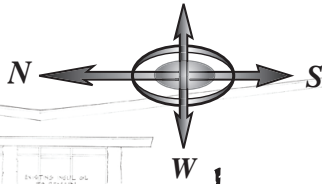


configured for  
room capacity  
amenities

**40 - 60 people**  
90  
grand piano, cocktail lounge,  
full bar, shoji shutter view  
to dining room below,  
floor-ceiling windows with 2nd  
floor view  
table size  
60" rounds (seats 6-10)



Cascade Mountains  
& Lake Union



# Penthouse Schematics:

## Layouts and Dimensions

**configured for**  
room capacity  
amenities

**70 -90 people**  
90 people  
grand piano, cocktail lounge,  
full bar, shoji shutter view  
to dining room below,  
floor-ceiling windows with 2nd  
floor view  
table size  
60" rounds (seats 6-10)

